

Historic, Archive Document

Do not assume content reflects current scientific knowledge, policies, or practices.



62.09

Through the Garden Gate

LIBRARY
RECEIVED
★ AUG 16 1944 ★
U. S. Department of Agriculture



*A Preview
of Spring*

Mrs. ...
**F. LAGOMARSINO
& SONS**

FALL 1944

721-23 J Street, SACRAMENTO 5, CALIFORNIA

FORTUNE
See Page 6



*Just a
small
corner of
the farms
where our
Daffodil
Bulbs
are grown*

from these fields we bring you the world's finest bulbs ~

We are indeed grateful that in these trying times we live in a country where part of our effort can be devoted to bringing beauty into your gardens, and while the acreage devoted to growing bulbs must necessarily be greatly reduced this year, and will continue to be very small until the war is won, we can give you assurance that the bulbs you will receive from us will be the very finest grown in this country. Out here in the Pacific Northwest we have soil and climatic conditions that have enabled bulb growers to grow bulbs equal to and in many cases superior to those formerly grown in Europe, and from these plantings the very cream of the crop comes to us. We will try to serve all of our customers, but please remember that stocks are very scarce, so order EARLY. We can give you better service if you will do so.



*Looking
at a
corner
of the
fields
where the
finest
Tulip
Bulbs
are
produced*

Telecote Giant Ranunculus

One of the showiest spring flowering bulbs. A single bulb will often produce twelve or more blooms, and the bulbs get larger each year. The colors range from reds, yellows, pinks, gold to whites, and our famous Tecolote strain consists almost entirely of Giant Camellia Type Double flowers, with some semi-doubles. Ranunculus can be planted from September to February in mild climates, but our customers in the colder climates should order bulbs for delivery in the fall and keep them stored in a dry place, such as the cellar, until planting conditions are favorable, along in April or May.

COLORS: GOLDEN YELLOW . . . RED . . . PINK . . . ORANGE . . . WHITE

ANY OF THE ABOVE COLORS

12 for 95c 25 for \$1.75 100 for \$6.50

GIANT MIXTURE: A well-balanced mixture of all colors for those who desire lots of color and bloom but have no definite color scheme in view.

25 bulbs \$1.50 50 bulbs \$2.75 100 bulbs \$5.25



Plant bulbs with the claws down as shown. Crown or top of the bulbs should be 2 inches below the surface of the ground. Plant bulbs 3 to 4 inches apart in solid beds for massed effect. Soaking bulbs 2 to 3 hours before planting will hasten germination. Plant in full sun.



RANUNCULUS

Their poppy-like flowers make fine flower arrangements and their long stems make them ideal cut flowers. Planting season is the same as for Ranunculus. We offer two strains:

MONARCH DE CAEN, Mixed

Tall growing strain with large saucer-shaped flowers. Very distinct flowers, some doubles.

ST. BRIGID, Mixed

Large, sturdy flowers on strong stems. Mostly double and semi double flowers.

12 bulbs 85c 25 bulbs \$1.50
100 bulbs \$5.75

Growing Anemones



Set bulbs 2 to 3 inches deep in well-drained bed, with pointed end down. Soak 2 to 3 hours before planting. Space 6 to 8 inches apart. Sunny location is best. Fertilize every other week after bulbs start.



ANEMONES



Lago's
American-Grown

DAFF

(NARC)

Select bulbs from the largest
LARGE TRUMPET VARIETIES
Yellow Trumpet



KING ALFRED

AEROLITE

A flower of excellent proportions and grace; perianth deep primrose with a pure medium yellow trumpet. Very large and long lasting.

3 bulbs for 50c 12 for \$1.85 25 for \$3.50 100 for \$12.50

ALASNAM

Wide, short, DENSELY FRILLED trumpet of pure deep yellow with perianth a shade deeper. Excellent variety for grouping and a fine forcing type.

3 bulbs for 50c 12 for \$1.85 25 for \$3.50 (limit 25 to a customer)

DAWSON CITY

A prize exhibition variety, and showy garden type; broad flat perianth of smooth substance and a well-formed trumpet of a self golden-yellow. Recommended.

3 bulbs for \$1.35 12 for \$5.00 25 for \$9.50 (limit 25 to a customer)

DIOTIMA

Fast taking its place as one of the best of the large super-giant yellow trumpets; perianth five to six inches across; color deep primrose with trumpet slightly deeper in color. Exceptionally well proportioned and carried on graceful, tall stems. A real beauty.

3 bulbs for \$1.35 12 for \$4.75 25 for \$9.00 (limit 25 to a customer)

MINISTER TALMA

Flower of good substance, uniform golden yellow. Especially good forcing variety as it is a strong grower and free-flowering.

3 bulbs for 50c 12 for \$1.85 25 bulbs for \$3.50

OLYMPIA

One of the very best garden varieties, being very free-flowering and hardy. Perianth is pure primrose, nicely twisted; trumpet a deeper tone and frilled. A big improvement over the popular Emperor of previous years.

3 bulbs for 50c 12 for \$1.75 25 for \$3.00 100 for \$10.00

TRESSERVE

Rapidly becoming as popular as the ever popular King Alfred. Attracts immediate attention because of its size, the giant trumpet often measures two inches across the mouth, and is deeply lacinated. Trumpet is deep canary yellow; perianth a shade lighter. A fine companion to plant along with King Alfred.

3 bulbs 50c 12 for \$1.75 25 for \$3.25 100 for \$12.50

THE FIRST

As its name implies, it is about the first of the large trumpet daffodills to bloom. A fine variety with perianth and trumpet of sulphur yellow. Highly valued as a cut flower due to its earliness. Put this at the top of your list for early blooming types.

3 bulbs for 85c 12 for \$3.00 25 for \$5.50 100 for \$20.00
(Double-nose bulbs only)



DIOTIMA

KING ALFRED

If you have room in your garden for only one variety of daffodil, that one must be King Alfred, for this is the universal favorite. The deep golden yellow flower is carried on stiff stems. Trumpet is deeply frilled and recurved at the mouth. By far the best all-yellow in its price range. Top favorite in the cut flower trade. Put this at the top of your order.

3 bulbs for 50c 12 for \$1.75 25 for \$3.25

100 for \$12.50

ODILS

ISSUS)

bulb farms on the Pacific Coast



The Large Trumpet Daffodils are made up of those varieties that have a trumpet or crown as long or longer than the perianth segments and can be grouped in three types, the yellow trumpet, the bi-color trumpet, and the white trumpet varieties. As we cannot list every variety in these groups, we have selected the leading ones in each category, offering only those having outstanding merit. Daffodils or Narcissus should be planted with top of the bulbs 6 inches below the surface of the ground, point up as illustrated. Space them 6 to 9 inches apart, depending on the size of the bulb. Bulbs will multiply and can be left undisturbed for 3 to 4 years.

White Trumpet

BEERSHEBA

A forerunner of a new race of daffodils gradually being developed. Flower is ALL WHITE, measuring nearly five inches across. Perianth is large and perfectly flat; the trumpet is long and beautifully flanged at the mouth. It is a grand exhibition variety. Flower has wonderful substance and will keep for weeks. Winning awards at many flower shows.

Each \$2.00 3 for \$5.50
12 for \$19.00 (limit of 12 to a customer)

MRS. E. H. KRELAGE

Often described as the "White King Alfred." Perianth pure white; trumpet opens pale lemon and turns creamy white.

3 for 85c 12 for \$3.00 25 for \$5.50



SPRING GLORY

Bi-Color

OLIVER CROMWELL

A bi-color daffodil that is highly recommended because it will produce twice the number of flowers of any other variety. Good contrasting colors, and flowers of fine texture.

3 bulbs for 75c 12 for \$2.75
25 for \$5.25 100 for \$17.50

SPRING GLORY

The general favorite bi-color for garden and forcing. Trumpet of pure yellow, white perianth, excellent stem and free blooming. The best in its price class.

3 bulbs for 50c 12 for \$1.85
25 for \$3.50 100 for \$12.50

JEFTA

A new bi-color that is gaining great popularity. Very delicately colored giant trumpet of nice size; cream colored perianth and pale lemon trumpet slightly recurved at mouth. Seedling of King Alfred; early.

3 bulbs for \$1.75 12 for \$6.50
25 for \$10.00 (limit 25 to a customer)



OLYMPIA



THE FIRST

TRESSERVE

DOUBLE-NOSE BULBS

give more than twice the blooms
at but little extra cost

Most bulbs produced at the farms are single nose bulbs; that is, bulbs that will produce one or two flowers the first year. Among the bulbs grown, however, a very small percentage develop into what is termed "double-nose" bulbs, and these will produce anywhere from two to five flowers per bulb the first year. Generally the quantity of double-nose bulbs is too small to offer separately, but this year we are fortunate to be able to offer a limited number of double nose bulbs in the varieties listed below.

THE FIRST KING ALFRED TRESSERVE

3 bulbs for 85c 12 for \$3.00
25 for \$5.50 100 for \$20.00

AEROLITE





DICK WELLBAND

Incomparabilis

DAFFODILS

DICK WELLBAND

One of the finest of the Incomparabilis class; a strong grower and a free bloomer. Perianth is pure white; the cup flame orange. Color does not fade but rather intensifies with age. Its great beauty lies in the startling contrast between petals and cup. Fine exhibition and forcing variety.

3 bulbs for \$2.50 12 for \$9.00
25 for \$15.00 100 for \$56.00

FORTUNE (See picture on cover)

This is undoubtedly the most brilliant flowering daffodil of all and will become the world's leading commercial variety when stocks become plentiful in future years. It is a flower of incomparable beauty with a broad clear yellow perianth of very solid texture and a very large and long bold trumpet of coppery red-orange. The perfect flower is carried on long, strong stems. It is a strong grower and early bloomer.

All Double-Nose Bulbs
Each \$3.00 3 for \$8.50

12 for \$30.00
(Limit of 12 to a customer)

HELIOS

Golden yellow perianth; cup opens a little darker than the petals and in a cool climate gradually changes to light orange. Very balanced flower on long stems and an early bloomer.

3 for 60c 12 for \$2.25
25 for \$4.00 100 for \$15.00

CARLTON

A fine clear yellow of self-color of great size. Flat overlapping perianth and large expanded crown frilled at the brim; a magnificent plant of extreme vigor.

3 bulbs for \$1.00 12 for \$3.75
25 for \$7.00



HELIOS

Special Collection of Incomparabilis DAFFODILS

as listed on pages 6 and 7

72 Bulbs - \$20.00

(Six of each except Fortune)

144 Bulbs - \$38.00

(Twelve of each except Fortune)

300 Bulbs - \$75.00

(Twenty-five of each except Fortune)

All top-grade bulbs . . .
our very best quality.

CARLTON

CROESUS (INCOMPARABILIS)



CROESUS

Equally as popular for garden and exhibition; canary-yellow perianth of perfect form, with the outer petals nearly touching; the inner ones overlapping, opening flat; broad fluted cup of rich orange to base; substantial, free flowering, and a fine propagator.

3 bulbs for 50c 12 for \$1.85
25 for \$3.50 100 for \$12.50

SCHERAZADE

Beautiful comparatively new variety with beautifully proportioned flower having a citron-colored perianth and a heavily frilled cup of PURE CHROME YELLOW self-color throughout with no trace of orange.

Each \$1.50 3 for \$4 12 for \$15
(Limit of 12 to a customer)



The Incomparabilis Group of daffodils embrace a general class whose distinguishing characteristics are having a cup or crown not less than one-third but less than equal to the length of the perianth segments. There are two types in this group, the yellow shades with or without red colorings on the cup, and the bi-colors with white or whitish perianth, and self yellow, red-stained, or red cup. Some of our most beautiful daffodils come under this division.

FRANCISCA DRAKE

It is hard to describe adequately the beauty of this flower. The perianth is silvery-white, tinted gold at the base, which shows through on the outside; the cup, wide and deep, is golden yellow at the base, changing gradually to flame orange at the densely ruffled edge. Flowers grow on tall stems, making them fine for cutting and pot culture in the greenhouse. Strong, free-flowering. Highly recommended.

3 bulbs for 85c 12 for \$3.00 25 for \$5.50 100 for \$20.00

LUCINIUS

A dandy self-colored golden yellow flower of unusually good form and excellent substance. Perianth is star shaped; cup is broad and well shaped. A finely balanced flower that will give lots of color in the garden and provide plenty of cut flowers at a low cost. A very distinct type that should be of special value to hybridizers.

3 bulbs for 50c 12 for \$1.75 25 for \$3.00 100 for \$10.00



FRANCISCA DRAKE

SIR WATKIN

The all-yellow giant Welsh Daffodil. Perianth sulphur, cup yellow tinged orange. An old variety still popular for forcing and cutting.

3 bulbs for 45c 12 for \$1.50
25 for \$2.75 100 for \$9.00

MILFORD HAVEN

Fine flower with cream-white perianth and wide cup, ruffled and deeply frilled at edge, chrome yellow at base and shading into orange-scarlet. A substantial flower of good substance.

3 bulbs for 60c 12 for \$2.25
25 for \$4.00 100 for \$12.50



JOHN EVELYN

YELLOW POPPY

Well-formed flowers with overlapping primrose-yellow perianth and expanded shallow cup, bright yellow, edged orange, height 20 inches. Excellent for forcing and unsurpassed for naturalizing.

3 bulbs for 60c 12 for \$2.00
25 for \$3.75 100 for \$12.50

RED CROSS

Another outstanding leader in the Daffodil world. Extra large, strong flower carried on long, strong stems. Perianth opens flat, is of primrose yellow; cup is deep and densely frilled and a deep orange color. Substantial and long lasting. Ideal for garden or exhibition.

3 bulbs for 85c 12 for \$3.00
25 for \$5.50 100 for \$17.00

RED CROSS

MILFORD HAVEN



JOHN EVELYN

A general favorite throughout the Daffodil world, and outstanding among the newer Incomparabilis hybrids. The perianth is pure white without a trace of shading, opens flat, 4 to 5 inches across; the cup is flat, nearly 2 inches in diameter, densely frilled, lemon-yellow and fluted or shirred to the base. It's a strong, upright grower, free-flowering and a good propagator. Unexcelled for garden, greenhouse or show.

3 bulbs for 95c 12 for \$3.50
25 for \$6.00 100 for \$22.50



Barrii DAFFODILS

The distinguishing character of this group is that the cup or crown is less than one-third the length of the perianth segments. The group has two classes, the yellow, and the bi-color. The yellow shades have yellow perianths with trumpets either with or without red coloring, while the bi-colors have white or whitish perianth and self-yellow red stained, or red cup.

DIANA KASNER

This is an outstanding Barrii Daffodil having a cream-yellow perianth and a large fluted yellow cup with blood-red frill, very free-flowering and an excellent forcer. This is unquestionably one of the very best for all purposes, and offers big returns for a little money.

3 bulbs for 45c 12 for \$1.50 25 for \$2.75 100 for \$10.00

FIRETAIL

One of the most popular of the red-eyed Barrii types, recently introduced and a truly great flower. Large spreading and overlapping ivory-white perianth of fine substance, and a flat crinkled crown of richest blazing-orange red cup with scarlet frill. A tall, vigorous grower and a profuse bloomer. Has won many honors.

3 bulbs for 85c 12 for \$3.00 25 for \$5.50 100 for \$20.00



DIANA KASNER

ALCIDA

A very large flower with white perianth opening flat and star shaped; broad citron-yellow cup with blood-orange frill. A strong growing variety of fine substance, very free flowering, and a late variety.

3 bulbs for 60c 12 for \$2.25
25 for \$4.00 100 for \$15.00

FAIR LADY

Especially important in the Daffodil world because it is the very last to bloom. It is a flower of fine substance, with large, broad petals, having a perianth of deep orange yellow. If you have a few of the late flowering varieties you can extend your period of bloom for several months.

3 bulbs for 75c 12 for \$2.75
25 for \$5.25 100 for \$15.00

FAIR LADY



FIRETAIL

At the time this catalog is being printed, the crop of **Firetail** looks somewhat uncertain. When ordering this variety, please indicate a substitute we may send if Firetail is not available.



MRS. BARCLAY

Large flower, with flat, reflexed, broad-petaled overlapping perianth of pale primrose; deeply frilled flat cup of primrose-yellow with dainty orange picotee. This is an extremely showy flower of great substance and a fine flower for both garden and show purposes. We recommend this very highly.

3 bulbs for 60c 12 for \$2.00
25 for \$3.75 100 for \$14.00

MRS. BARCLAY



Leedsii DAFFODILS

The distinguishing character of this class is a white perianth with cup or crown white, cream or pale citron, sometimes tinged with pink or apricot. The long crowned varieties have cups or crowns not less than one-third but less than equal to the length of the perianth segments, while the short crowned varieties have a cup or crown less than one-third the length of the perianth segments.

MRS. R. O. BACKHOUSE

THE FAMOUS "PINK TRUMPET DAFFODIL" and indeed a very beautiful flower; the fine informal perianth is ivory white and beautifully proportioned; the long, slim trumpet is APRICOT PINK, changing to shell pink at the deeply fringed edge. There is a delicate beauty about the whole flower that is impossible to describe. It has great substance, is an early bloomer, and long lasting. This flower belongs in every garden.

\$2.00 each 3 bulbs for \$5.50 12 for \$19.00
(Limit of 12 to a customer)



SILVER STAR

GERTIE MILLAR

A very wonderful flower of the new GIANT LEEDSII type with pure white perianth of enormous size; the beautiful cup is pale primrose, deeply fluted and frilled and of translucent texture; unusually long pistils and anthers match these colors perfectly.

3 bulbs for \$2.25
12 for \$9 25 for \$15
(Limit 25 to a customer)

LORD KITCHENER

A very hardy variety that will stand the most severe weather. Fine star-shaped white perianth; canary-yellow cup, nicely frilled.

3 bulbs for 50c
12 for \$1.85 25 for \$3.50
100 for \$12.50



MRS. R. O. BACKHOUSE

SILVER STAR

Perfect broad-petal-star-shaped perianth of pure cream-white, with finely proportioned, wide-mouthed trumpet of primrose, changing to cream-white, just a shade deeper than the perianth. This is an extra fine variety, and very free-blooming.

3 bulbs for 60c 12 for \$2.25
25 for \$4.00 100 for \$15.00

TUNIS

A large robust growing flower of most distinct character and great lasting substance; broad waved white perianth and large bold ivory crown with handsome flanged and serrated brim, retaining a flush of coppery gold at the edge. A distinct and "different" flower.

3 bulbs for \$2.25 12 bulbs for \$9.00
25 for \$17.00

GERTIE MILLAR

TUNIS



MRS. NETTIE O'MELVENY

A very charming daffodil with a pure white perianth and cup of clear lemon-yellow with orange picotee. The splendid foliage, tall stem, and good neck make it a most delightful flower. Everyone who sees it falls in love with this little dancing daffodil.

3 bulbs for 45c 12 for \$1.50
25 for \$2.75 100 for \$10.00





FEBRUARY GOLD

Miscellaneous

BULBS

for brightening nooks and crannies



Cyclamineus Hybrids

FEBRUARY GOLD

A very fine and very early trumpet hybrid. Its perianth is golden yellow with a large trumpet of the same color, tinged orange. It is especially desirable because of its earliness and deep color.

3 bulbs for 60c 12 for \$2.25
25 for \$3.50 100 for \$12.00

Triandrus Hybrids

MOONSHINE

A beautiful Triandrus hybrid, star-shaped creamy white flower, often three to a stem, drooping gracefully, very beautiful and a great favorite, especially for the rock garden or for naturalizing in the shade.

3 for 60c 12 for \$2.25
25 for \$4.00 100 for \$15.00

THALIA

Often described as the "Orchid Narcissus" this is indeed a most beautiful variety. There are often three and four flowers to a stem, all two inches or more across, making a very delightful cluster. Everyone who sees it buys it. Fine for corsages, for rockeries and forcing.

3 bulbs for 85c 12 for \$3.25
25 for \$6.00 100 for \$22.50

Miniature Daffodil

QUEEN OF SPAIN

A very distinct graceful and beautiful daffodil, highly recommended for planting in pots and bowls, or naturalizing in woods, rock gardens, etc. The flowers vary slightly in size, and sometimes in form of trumpet, but all are soft, delicate canary-yellow, with a graceful reflexing perianth. Height about 12 inches.

3 bulbs for 85c 12 for \$3.25
25 for \$6.00 100 for \$20.00

(Supply uncertain; please indicate substitute when ordering.)

Jonquilla Hybrids

GOLDEN PERFECTION

This is certainly one of the finest of the daffodil family. There are two flowers nearly four inches across carried on heavy, tall stems. Perfect perianth with overlapping segments, deep-citron-yellow with mica sheen and cup of pure gold perfectly proportioned to balance of flower. Calyx grey-green flecked with gold. Unique in its class.

\$1.25 each 3 for \$3.50 12 for \$12.00
(Limit of 12 to a customer)

GOLDEN SCEPTRE

The forerunner of the new graceful hybrids, this free-flowering hybrid merits a place in every garden. Flowers are deep Jonquil yellow, three inches in diameter, often two on a stem. The keeping qualities are excellent.

3 bulbs for 50c 12 for \$1.75
25 for \$3.00 100 for \$10.00

JONQUILLA SIMPLEX

The true single sweet jonquil, of light elegant growth, bearing out of doors in May charming clusters of numerous small rich flowers of delicious scent. Three to five flowers on a single stem. Fine for rockeries.

3 bulbs for 50c 12 for \$1.75
25 for \$3.00 100 for \$10.00

JONQUILLA FLORE PLENO

The true old DOUBLE sweet jonquil producing in spring little heads of rich yellow double flowers, very fragrant and attractive. Fine for cutting.

3 bulbs for 50c 12 for \$1.75
25 for \$3.00 100 for \$10.00

ORANGE QUEEN

A very striking variety with 2 or 3 flowers on a stem. Intense golden-orange, cup prettily fluted. Very fragrant. Free-flowering.

3 bulbs for 50c 12 for \$1.75
25 for \$3.00 100 for \$10.00



MOONSHINE



QUEEN OF SPAIN



THALIA



GOLDEN SCEPTRE

Poeticus

Poetaz
and Double

NARCISSUS



Double Daffodils

CHEERFULNESS

This double Elvira is a very attractive variety with CLUSTERS of very pleasing double white Poetaz flowers. Erect stems, each bearing clusters of small blooms with broad, rounded creamy white perianth and full double center of creamy white and yellow. A fine garden and show variety.

3 bulbs for 50c 12 for \$1.75
25 for \$3.00 100 for \$10.00

MARY COPELAND

One of the new semi-double type, this is one of the most striking doubles of all. The long petals are pure cream-white with a golden ray down the center, interspersed with shorter petals of lemon and brilliant orange, giving a three-color effect. Fine for garden or bench.

3 bulbs for \$1.00 12 for \$3.50
25 for \$6.50 100 for \$22.50

THE PEARL

A very nice flower; not too double, creamy white, interspersed with sulphur-yellow, deeper at the center. Makes a very charming flower.

3 bulbs for 50c 12 for \$1.75
25 for \$3.00 100 for \$10.00

TWINK

A double of the semi-full type, the petals alternating a soft primrose and clear orange, and so arranged as to give the flower a most attractive appearance and to make it a most adaptable flower for decorative work. It's a good forcer and flowers very early, is a free bloomer, and very hardy.

3 bulbs for 75c
12 for \$2.75 25 for \$5.00
100 for \$18.00

Poetaz Daffodils

KLONDYKE

One of the showiest of the Poetaz types. Has four to seven flowers on a stem. Perianth is rich yellow; cup is a darker shade. This is an exceptionally fine garden variety where you want lots of bloom.

3 bulbs for 45c 12 for \$1.50
25 for \$2.75 100 for \$10.00

LAURENS KOSTER

A good old standby and no doubt the finest Poetaz for forcing. The perianth is creamy white and the cup is lemon yellow. Each stem usually has from five to seven flowers, and stands up well when cut. This free-flowering variety is highly recommended for forcing or garden.

3 bulbs for 45c 12 for \$1.50
25 for \$2.75 100 for \$10.00

ACTAEA

The largest Poeticus in existence. Broad snow-white perianth of great substance and good form; the very large eye is broadly margined with dark red. A most beautiful exhibition variety.

3 bulbs for 50c 12 for \$1.75
25 for \$3.00 100 for \$11.00



MARY COPELAND



TWINK



LAURENS KOSTER



ACTAEA



CHEERFULNESS



MUSCARI



Plant *Ixias*
one inch deep.

IXIAS

A most pleasing little flower, star shaped and brightly colored, that can be planted outdoors in the warmer climates but must be planted inside in pots in the colder states. Offered in assorted colors only.

12 bulbs for 85c

25 for \$1.50

100 for \$5.50



IXIAS



CROCUS

CROCUS *Plant them
2 inches deep.*



One of the earliest flowers to bloom in the spring and perfectly hardy anywhere. Very effective for borders or beds, also for planting in clumps among the shrubbery and rock gardens. Often scattered throughout the lawn for unusual effects.

COLORS: Yellow, Blue, Purple and Striped.

ANY OF THE ABOVE COLORS:

12 for 95c 25 for \$1.75 100 for \$6.50

MIXED COLORS:

12 bulbs for 75c 25 for \$1.35 100 for \$5.00

CROCUS SUSIANUS—February Flowering Crocus

CROCUS SATIVIUS—November Flowering Crocus

A variety of Crocus that blooms in the fall instead of spring. Flowers are purple-lilac feathered violet. Priced same as above.



SCILLA CAMPANULATA

SCILLAS

(Wood Hyacinth.) Bears spikes, 15 inches high, of bell-like flowers, during early spring. Does best if planted in shady locations. Plant 5 to 6 inches deep.

Very effective planting for borders.
Colors: Rose, Blue, White.

12 bulbs for 95c 25 for \$1.85
100 for \$6.50



HYACINTHS



HYACINTHS

We are especially pleased this year to offer American grown Hyacinths. Bulbs of this lovely spring flower are extremely scarce, and while we would like to be able to offer these in assorted colors, we regret that the limited amount of stock available compels us to offer assorted colors only. Our bulb grower reports that the Hyacinths have looked extremely good this year, and we'll send you some nice, healthy bulbs. But order early, for stocks are limited and orders will have to be filled in the order they are received.

3 bulbs for \$1.25 12 for \$4.50 25 for \$8.50

(In order to distribute bulbs to as many as possible, we must limit the number to any one customer to 25 bulbs)

Bulbs for outdoor and conservatory planting

All of the bulbs listed on this page can be grown outdoors in the south and on the west coast where weather conditions are favorable, but in the colder eastern and northern states, some should be planted in pots and after they are well started, placed in a sunny window or conservatory.

FREESIAS

Freesias are easy to grow, but hardy for outdoor planting only in the warmer states. Do not plant them outdoors in the east or northern states where freezing weather is experienced. These plants make one of the most valuable flowers for cutting, also, and are delicately perfumed. A single bloom permeates the entire room.

When planting in pots, use a good rich loam. When planted outdoors, plant in well-drained soil in full sun or partial shade. Plant bulbs point up, 3 to 6 inches apart, and top of bulb 2 to 3 inches below level of ground.

COLORS: Gold, Pink, Red, Orange, White.

12 bulbs for 85c 25 for \$1.50 100 for \$5.50
 MIXED BULBS: 12 for 75c 25 for \$1.40 100 for \$5.00



FREESIAS

LEUCOJUM (Snowflakes)

A hardy bulb for all states. One of the earliest and most attractive spring flowers; grows 12 to 18 inches high and bears dainty white flowers tipped with green. Plant in good, light, well-drained soil, 4 to 6 inches apart, 2 inches deep.

12 bulbs for \$1.10 25 for \$2.00 100 for \$7.50

IXIOLIRION

Another hardy bulb that should be freely planted. It is one of the last of the small "spring" bulbs to flower, and has a number of deep blue tubular flowers on slender stems. This importation from Asia is fast becoming one of the most popular of the small flowering bulbs.

12 bulbs for \$1.50
 25 bulbs for \$2.50
 100 bulbs for \$9.50



WATSONIAS

TRITELEIA

(Spring Star Flower.) Single pale blue flowers with white center are born on short stems, and are very fragrant. They multiply rapidly and are excellent in the rockery or under shrubs or trees as ground coverers. Perfectly hardy anywhere. Height about 3 to 4 inches.

12 bulbs for \$1.00 25 for \$1.75
 100 for \$6.50

SPARAXIS

Delightful spring-blooming bulbs of the Ixia group, perfectly hardy, but should be protected in cold climates. The beautiful flowers are borne on graceful spikes about 8 inches high, and the colors are varied and bright. A planting of Sparaxis is a riot of color. Also fine for growing indoors.

12 bulbs for 85c 25 for \$1.50
 100 for \$5.75

SPARAXIS



IXIOLIRION



WATSONIAS

Hardy bulbs for outdoor planting only in the southern states and in California. These star-shaped flowers grow on tall, wiry stems, and make ideal cut flowers. They are vigorous growers, and in full sun will make beautiful beds of flowers in many shades and colors.

12 bulbs for \$1.35 25 for \$2.50
 100 for \$9.00



WATSONIA

Plant top of bulb 3 inches below the surface of the ground.



REGAL LILY



HARDY GARDEN *Lilies*

REGAL LILY « America's Favorite

Ever since the introduction of the Lilum Regale, this fine flower has been America's favorite, and rightly so, for it is one of the loveliest and hardy in cultivation. It grows readily and vigorously everywhere, often reaching a height of 5 to 6 feet, and established plants will bear as many as 15 to 20 flowers on a stem. This sweet-scented lily has a delicate shading of pearly pink shading to gold at the throat, with pure white petals, making a beautiful contrast. Our stock of this lily has been raised from especially selected stock plants and is superior to those ordinarily offered.

3 bulbs for 65c 12 for \$2.50 100 for \$17.00

SUNSET LILY

Here is a lily that does well most anywhere in almost any type soil. It is a strong grower, flowering in July and producing as many as 20 flowers to a stem when fully established. The contrasting colors of sunset-red and yellow spotted petals makes a very showy flower. Highly recommended.

3 bulbs for 85c 12 for \$3.25 25 for \$6.00 100 for \$20.00

FORMOSANUM LILY

Our stock of this magnificent lily is the result of ten years of seed selection, so that the strain we offer is especially fine. The plants are uniformly tall, the flowers are extremely large and of unusual substance. The flowers are white with a beautiful pale emerald green throat and slight reddish brown shading on exterior petals. Late flowering. We recommend it.

50c each 3 bulbs for \$1.25
12 bulbs for \$4.50



SUNSET LILY

FORMOSANUM LILY



GROWING LILIES

Lilies are easy to grow and do well almost anywhere. An ideal soil is one which is sufficiently porous to drain rapidly, but rich enough in humus to retain moisture for the plants during the summer. All Lilies are related to the wild flowers and do not take kindly to heavy fertilizing or cultivation. Plant Lilies at least four times the diameter of the bulb, below the surface of the soil. Most Lilies will grow very well if potted.

All Lily Bulbs delivered during October and November.

PLANT THIS FALL BLOOM NEXT SUMMER

HEMEROCALLIS » » (Day Lilies)

Daylilies represent one of the horticultural triumphs of recent years and today are among our most important perennials, assuring an unending supply of lily-like flowers from early summer till fall. Besides having charm of color, foliage and habit of growth, this plant is without a pest, requiring a minimum amount of care.

Daylilies have a particular value wherever plants with a long season of bloom, hardy characteristics, and few cultural needs are appreciated.

Plant them in groups of 3 or more toward the middle of the large border; in rockeries; near fishponds, etc. Use only in an informal manner, because of their loose habit of growth. Plant in partial shade in warm climates; full sun or semi-shade otherwise. Pick off faded buds for best effect.

Because of limited stock we offer only mixed colors, ranging from golden yellow to bright orange, with some bi-colors with salmony undertones.

3 for \$2.00 6 for \$3.50 12 for \$6.00



LILY, X CENTIFOLIUM

This magnificent lily is a hybrid that is the result of crossing *L. regale* and *L. centifolium*. The resultant hybrids were again crossed with *L. centifolium* and for five years during the flowering period the biggest and tallest were selected for seed. The result of this breeding has resulted in a super giant trumpet lily, flowering two weeks later than Regal and stronger and better. Plant some of these along with Regals and see the difference.

50c each 3 bulbs for \$1.25 12 for \$4.50

LILY, RUBRUM

Rosy white, reflexed flowers, heavily spotted with crimson, this is indeed a most showy variety. The form and color are exquisite.

3 for \$1.00 12 for \$4.50 100 for \$30.00

LILY, TENUIFOLIUM

In contrast to the heavier and larger growing varieties, this dainty Coral Lily is one of the earliest to bloom. It is a small slender Lily, not more than 18 inches high, with heads of 6 to 8 flowers of deep scarlet with waxy recurved petals. A favorite for rockeries and for planting in front of borders.

3 bulbs for 65c 12 for \$2.50 100 for \$17.00

LILY, SHUKSAN

Undoubtedly the finest of the so-called Bellingham hybrids, being a cross between *L. Humboldtii magnificum* and *L. Pardalinium*. The color is soft-yellow heightened by widely spaced maroon dots.

Grows 4 to 6 feet with 15 to 25 flowers when established.

3 bulbs for \$1.00.

12 for \$3.50.

100 for \$25.00.



TENUIFOLIUM

L. SPECIOSUM RUBRUM

Plant Lilies
4 to 5 inches deep.





DUTCH IRIS, WEDGEWOOD

The Beautiful DUTCH

Plant them for a wealth of color and

WEDGEWOOD

A very early, beautiful and tender iris which should not be grown outdoors without protection except in the South and along the Pacific Coast. It is an excellent forcing variety, very highly recommended for greenhouse forcing. Standards are of pale wedgewood blue with deeper colored falls. A prize winner wherever shown. Eastern customers can buy the bulbs this fall and hold them over until spring for planting outdoors when danger of freezing weather is past.

12 bulbs for 90c 25 for \$1.75 100 for \$6.50

3 New Dutch Iris

This new group is of recent origin and already in great demand by those who have seen them. The flowers are superior in substance, brilliancy and purity, and also earlier and larger than the old Dutch and Spanish Iris. These flowers are unsurpassed for cut flowers as they will stand any amount of handling and traveling and their earliness and good forcing make them excellent commercial varieties. And they are hardy anywhere. We recommend to you these new varieties.

De GRAAFF BLUE

A huge flowering variety of intense steel-blue. A flower of wonderful form and substance.

GOLDEN BEAUTY

An entirely new type of yellow with standards of clear yellow and falls of intense golden yellow. A most beautiful flower.

WHITE SUPERIOR

A true pure white of uniform clear color. Falls are broad and the entire flower has fine form.

3 bulbs for \$1.25 12 for \$4.50 25 for \$8.50
(Limit of 25 of a variety to a customer)

IMPERATOR
(Below)

YELLOW QUEEN

WHITE
EXCELSIOR



GOLDEN BEAUTY

WHITE
SUPERIOR

DeGRAAFF
BLUE



IRIS *have all the grace of an orchid* bloom at very little cost *** they are ideal cut flowers

DAVID TENERE

A true BI-COLOR Dutch Iris of excellent substance and form. The standards are WHITE and the falls are white on the INSIDE and yellow on the OUTSIDE of the petals. This unique color combination makes this one of the different Dutch Iris.

12 for 90c 25 for \$1.75 100 for \$6.50

GOLDEN LION (Spanish)

A beautiful yellow, very distinct. Standards are lemon yellow and the falls are golden yellow and beautifully RUFFLED. Both standards and falls are unusually wide. Very unique.

12 bulbs for \$1.25 25 for \$2.00 100 for \$7.50

IMPERATOR

A fine UNIFORM BLUE. A strong grower and late blooming variety that makes it ideal for forcing.

12 bulbs for 75c 25 for \$1.25 100 for \$4.50

VIOLET QUEEN

This unusual variety is very distinctive and outstanding in color. Both standards and falls uniform in color, the standard being a dark violet and the falls a light violet. It is a large flower of good proportion.

12 bulbs for \$1.25 25 bulbs for \$2.00 100 for \$7.50

WHITE EXCELSIOR

A very fine uniform pure white iris of good form and substance. Falls are very broad. Good early forcing variety. Best medium priced.

12 bulbs for 90c 25 bulbs for \$1.75 100 bulbs for \$6.50

YELLOW QUEEN

The very best early yellow in the medium price class. Standards and falls are uniform bright golden yellow that makes a very attractive flower that is extremely well balanced. It has won many awards. Highly recommended.

12 bulbs for 90c
25 bulbs for \$1.75
100 bulbs for \$6.00

MIXED IRIS

A splendid mixture of many outstanding varieties covering all color ranges. Here is a fine opportunity to get plenty of nice cut flowers during a period of about six weeks that these will be in bloom.

12 bulbs for \$.75
25 bulbs for 1.25
100 bulbs for 4.50
500 bulbs for 20.00

GOLDEN LION (Spanish Iris)



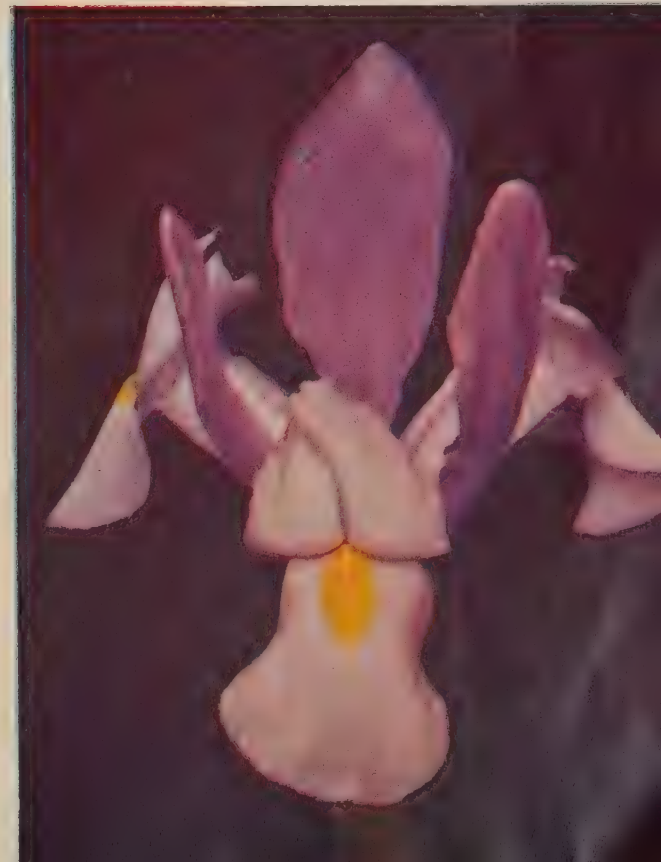
GROWING DUTCH IRIS

Dutch Iris are easily grown and will do well in full sun or partial shade. Plant them 3 to 4 inches deep, and 6 to 8 inches apart, in any rich light soil that has good drainage. Plant with the point up. Bulbs do not have to be taken up in winter, but in cold climates a winter mulch is advisable.

DUTCH IRIS



VIOLET QUEEN



"Lago"
American
Grown

Beautiful ~
DARWIN

All Darwin Tulips are perfectly hardy in all parts of the country and represent one of our most popular classes. These Tulips are characterized by their clear, fresh colors, usually free from mottlings, overlays or feathered edges, and in-



EUNICE



CITY
OF
HAARLEM



WM. COPELAND



PRINCESS
ELIZABETH

ALLARD PIERSON

Earliest of all the Darwins. Color, dark velvety red shading to purple. This tulip is one of the finest for forcing. Because this is the first tulip to bloom and lasts longer than any other variety, it deserves a prominent place in your garden.

3 bulbs for 55c 12 for \$2.00
25 for \$3.75 100 for \$14.00

AFTERGLOW

Deep rosy orange, suffused with salmon and salmon edge. This is a very beautiful and good lasting large flower of good substance and unusual coloring.

3 bulbs for 55c 12 for \$2.00
25 for \$3.50 100 for \$13.50

BARTIGON

A deep clear crimson flower with a white base ringed with blue. Strong grower and a good forcing variety. This variety holds its color in the sun and will not fade. This is one of the best reds.

3 bulbs for 60c 12 for \$2.25
25 for \$4.25 100 for \$15.00

CITY OF HAARLEM

Dark red with striking black and white center. This is a large growing tulip and can be used to advantage in combination with light colored spring flowers.

3 bulbs for 65c 12 for \$2.50
25 for \$4.75 100 for \$18.00

CLARA BUTT

The standard pink Darwin tulip. This flower has remarkable beauty, is of perfect form and of a lovely delicate pink color, flushed salmon rose. By far the most popular pink tulip.

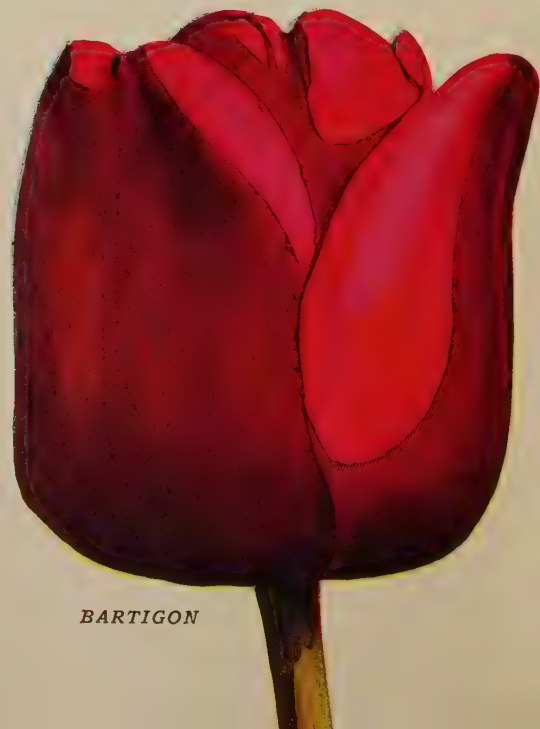
3 bulbs for 50c 12 for \$1.85
25 for \$3.50 100 for \$12.00



FLAMINGO



FARNCOMBE
SANDERS



BARTIGON

Dependable TULIPS

clude most of the clear colors, except brown or buff. Flowers are deep, bowl shape, borne on stiff stems. Best results are obtained by planting in groups of no less than 3 to 6 bulbs of a kind.

EUROPE

Salmon rose, deepening gradually to rich crimson. White base. Outlasts any other red tulip.

3 for 55c 12 for \$2.00
25 for \$3.75 100 for \$14.00

EUNICE

An enormous flower for clear rose pink. Striking base of white with blue shadows and black stamens.

3 bulbs for 75c 12 for \$2.75
25 for \$5.25 100 for \$20.00

FARNACOMBE SANDERS

Tall growing variety of beautiful geranium-scarlet tinged rose. One of the most handsome. Splendid for planting against green background and very effective in massed plantings.

3 bulbs for 55c 12 for \$2.00
25 for \$3.75 100 for \$14.00

FLAMINGO

A new distinct clear pink that holds its color. This flower has a silvery sheen and its fine oval shape and pointed flower makes it one of our most popular pink tulips. We recommend it highly.

3 bulbs for 55c 12 for \$2.00
25 for \$3.75 100 for \$14.00

PRINCESS ELIZABETH

A very beautiful clear pink tulip with lighter edge, gradually changing to rose pink. This is a large flower and has a white base. It is exceptionally effective when planted in beds and borders, and very outstanding against dark backgrounds.

3 bulbs for 55c 12 for \$2.00
25 for \$3.75 100 for \$14.00

TULIP CULTURE

Tulip Bulbs should be planted 5 to 6 inches deep and about 6 inches apart in any good loamy soil with good drainage, with point up. They need not be taken up in winter, but if they are, keep them in dry sand in a cool location where they will not freeze.

PRIDE OF HAARLEM

One of the standard and most popular of all red tulips. The color is deep rich rose deepening to crimson. Very large flower on tall strong stems. Sweet scented. Without a rival in its color class.

3 bulbs for 55c 12 for \$2.00
25 for \$3.75 100 for \$14.00

WM. COPELAND

One of the finest varieties for growing in pots and forcing. Flowers are beautiful soft lavender with a white center. This is the most popular of the lavender tulips and well deserving of its place at the top of the list.

3 bulbs for 45c 12 for \$1.75
25 for \$3.25 100 for \$12.00

YELLOW GIANT

A regal yellow tulip of true Darwin form. Blooms with the first of the Darwins. Large size flowers carried on strong stems 30 inches in height. A good keeper and one of the best show varieties.

3 bulbs for 60c 12 for \$2.25
25 for \$4.25 100 for \$15.00

ZWANENBERG

Large snow white flower on tall stem. White tulips are very scarce and we recommend ordering early as we ran out of these very early last year.

3 bulbs for 65c 12 for \$2.25
25 for \$4.25 100 for \$16.00



ALLARD
PIERSON



YELLOW
GIANT



PRIDE OF
HAARLEM



CLARA BUTT

Combining many shades of bronze, gold, yellow, purple, old rose, etc.

The BREEDER TULIPS

are unrivalled for beauty of tone and color

In this group will be found the odd colors that do not appear among the Darwin and Cottage Tulips. The colors are generally subdued and include buff, bronze, brown, purple and violet as well as attractive combinations of these shades. There are also brownish yellow and reddish orange colors that are most unusual.



DON PEDRO

BRONZE QUEEN

A very handsome large flower of golden bronze shaded amber with faint plum bloom, inside glistening bronzy amber. It has a shadowy beauty of its own that is most effective. A great favorite.

3 bulbs for 45c 12 for \$1.75
25 for \$3.00 100 for \$10.00

DON PEDRO

Brown with red brown suffused with flame gold. Inside tinged golden bronze. A flower of unusual contrasting colors and a good forcer.

3 bulbs for 55c 12 for \$2.00
25 for \$3.75

CARDINAL MANNING

One of the very largest breeders. Its color is a blend of wine red and rozy bronze. A strong growing late flowering variety and one of the best.

3 bulbs for 65c 12 for \$2.25
25 for \$4.00 100 for \$15.00

INDIAN CHIEF

One of the largest and handsomest tulips ever produced. Rich brown mahogany flushed purple edged warm brown, yellow base. A splendid exhibition variety.

3 bulbs for \$1.20 12 for \$4.00
25 for \$7.50



PINK PEARL

CHERBOURG

Orange yellow suffused with terra cotta towards base. A large globe-shaped flower on strong stem. Grand show flower.

3 bulbs for \$1.00 12 for \$3.50
25 for \$6.50

PINK PEARL

Clear pink shading to brilliant rose with center of pure gold. Immense bloom and a marvelous keeper and show flower. No doubt the finest pink breeder.

3 bulbs for 65c 12 for \$2.50
25 for \$4.75

CREATION

The very finest tulip of its color. Shiny coppery bronze. Flowers are carried on strong tall stems and are of exceptionally good substance.

3 bulbs for 65c 12 for \$2.50
25 for \$4.50

SUPERBA

Chestnut brown with thread edge of gold. A very fine large tulip that is very fragrant. An unusual variety for your garden.

3 bulbs for 65c 12 for \$2.50
25 for \$4.75

CARDINAL MANNING



INDIAN CHIEF



BRONZE QUEEN



You'll find grace and beauty in the COTTAGE TULIPS

with their lily-like form

The Cottage Tulip group is unique because there is a greater variation in flower form in this group of any other classification. Some blooms are very similar to the Darwins; others are egg-shaped; some lily-flowering with long, pointed, reflexed petals. The color range is excellent with all shades of blush, pink, salmon and rose, and brilliant shadings of carmine, cerise, crimson and yellow. Culture for Cottage Tulips is the same as for Darwins.

ALASKA

Long slender flower of clear bright yellow; petals slightly reflexed. The style, color and vigorous growth of this variety places it high among the yellow tulips.

3 bulbs for 55c 12 for \$2.00
25 for \$3.75 100 for \$14.00

DIDO

A very large oval flower shading from bright pink through salmon to golden orange; inside bright gold with base of coppery green. One of the outstanding novelty tulips.

3 bulbs for 65c 12 for \$2.50
25 for \$4.00 100 for \$15.00

G. W. LEAKE

One of the new strains of cottage tulips, color vermilion scarlet with deep cream base and ivory stamen. The arrangement of wide pointed petals gives it a triangular effect.

3 bulbs for 75c 12 for \$2.75
25 for \$5.00

INGELSCOMBE YELLOW

This is no doubt our outstanding yellow tulip. The large globular flowers are a glossy canary yellow and have the true shape of the Darwin tulip, hence it is often called the "Yellow Darwin".

3 bulbs for 45c 12 for \$1.75
25 for \$3.00 100 for \$10.00

MRS. MOON

Lily flowered rich golden yellow. Large vase-shaped flowers with narrow pointed reflexing petals, fragrant.

3 bulbs for 50c 12 for \$1.85
25 for \$3.50 100 for \$12.00

MRS. HOAG

Palest canary yellow, very large long straight stem and black anthers. A wonderful keeper and a fine show flower.

3 bulbs for 65c 12 for \$2.50
25 for \$4.50

PICOTEE

Most unusual cottage tulip. It has a typical cottage tulip shape, is a creamy white color with edges penciled with carmine and a base of pale gold.

3 bulbs for 55c 12 for \$2.00
25 for \$3.75

ORANGE KING

Large globe-shaped flower of glistening deep orange shaded scarlet, yellow center and black anthers. This is one of our most brilliantly colored tulips and should be in every garden; very fragrant.

3 bulbs for 45c 12 for \$1.75
25 for \$3.00 100 for \$10.00

IMPROVED WHITE QUEEN

An outstanding large flower of clear white. This is an improved white tulip of very fine substance and one that you will appreciate if you have been looking for the finest white tulip available.

3 bulbs for 65c 12 for \$2.50
25 for \$4.75 100 for \$18.00

SIREN

A clear pink lily flowering cottage tulip. It is an outstanding variety both for garden and cutting. Large flowers with reflexing petals.

3 bulbs for 65c 12 for \$2.25
25 for \$4.00



INGELSCOMBE
YELLOW



ORANGE
KING



G. W.
LEAKE

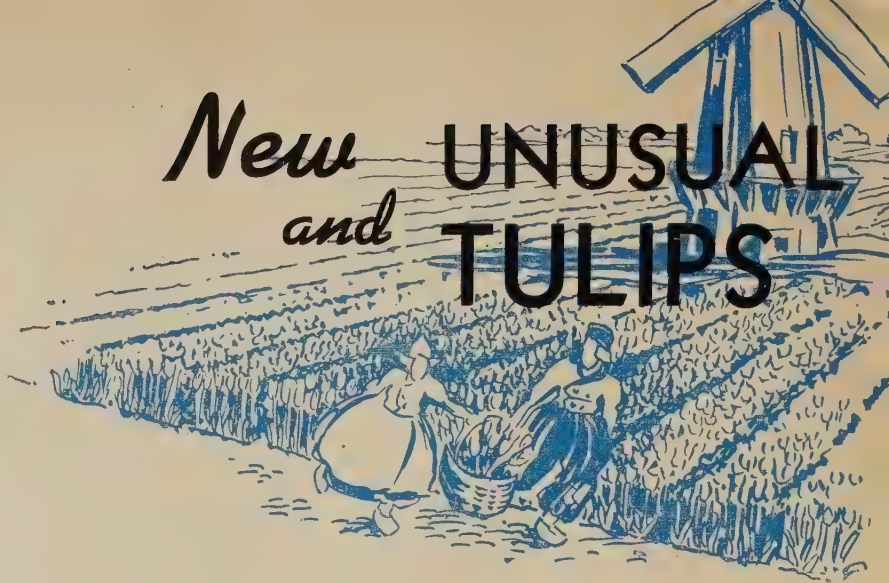


MRS. MOON



DIDO

New and UNUSUAL TULIPS



Just before the outbreak of the war in Europe, American bulb growers had secured from Holland some of the newer tulips they had been breeding for future introduction. The war destroyed most of the bulb plantings in Europe, so that only this stock imported into America was left from which to grow these new varieties. Today a few of these PEDIGREED VARIETIES, developed as a result of countless crosses between classes to develop new types, are now available. These new strains are stronger, more vigorous growers; colors are more striking and have greater sheen; the flowers have twice the strength and substance. These are the forerunners of what will be new in tulips as quickly as they can be put into commercial production on a scale large enough to make them available to everyone.

Try some of these NEW BLOOD TYPES in your garden now. It will be several years before they will be marketed in any quantity as stocks are small and most of them must be kept for production purposes.



ADVANCE TULIP

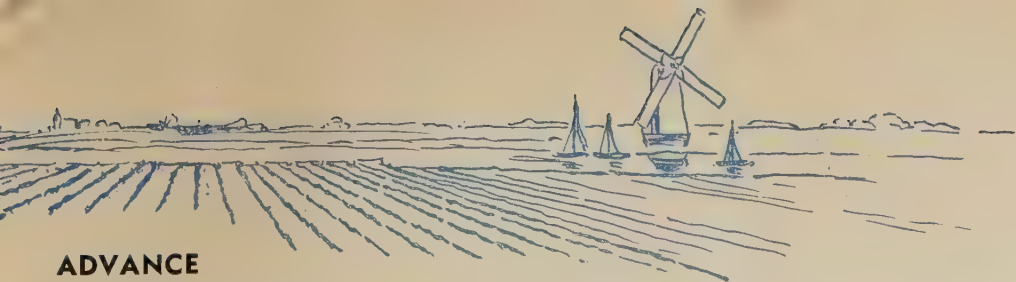


FANTASY TULIP

Fantasy Tulip

The most popular of all the Parrott Tulips with color identical to Clara Butt (of which it is a sport) but with the fantastic shadings, lacinations and excrescences that distinguish all Parrott Tulips. Its inner coloring is deep soft rose. The curious incrustations on outside of the petals are touched with shades of green.

3 bulbs for 75c 12 for \$2.50 25 for \$4.50 100 for \$17.00



ADVANCE

This might well be called the "Tulip of the Future" for it is the forerunner of a stronger and better race of tulips that is being developed by our tulip breeders in this country. Here is a tulip that, as the very name implies, is an advance showing of what we can look for in tulips years hence. Flower is enormous; stems are better; petals longer than the largest Darwin of the present, and blooms earlier. All in all it is a big advance in tulip culture, bolder and better than anything in the Darwin, Breeder or Cottage class. Beautiful red color with an overshadowing of deepest rose-orange. Plant some of these in your garden to compare with other tulips. Preview the tulip of the future.

3 bulbs for \$1.25 12 bulbs for \$4.75 25 bulbs for \$8.50
(Limit of 25 to a customer)

ADORATION

Soft pink, center deep ivory with blue fans and dark anthers. An improved Clara Butt of the new PEDIGREED TULIPS.

3 bulbs for \$1.00 12 for \$3.75

BLUE DANUBE

A very beautiful medium blue, violet within. White base, steel blue rays, black anthers.

3 bulbs for 75c 12 for \$2.75
25 for \$5.00

BENJAMIN FRANKLIN

A very large tulip of clear, deep lavender color—almost purple. It has a white base and stands on a tall, straight stem.

3 bulbs for 75c 12 for \$2.75
25 for \$5.00

CAMELLIA

A very well shaped and beautiful tulip of satiny rose-pink with a white base. Good grower on strong stem.

3 bulbs for 75c 12 for \$2.75
25 for \$5.00

DUKE OF WELLINGTON

This is a delightful pure white flower of great beauty and substance; white anthers and pure white base, and is carried on very stiff stem.

3 bulbs for \$1.00 12 for \$3.75
25 for \$5.75

SCOTCH LASSIE

Purest deep lavender with darker shade inside and with dark blue base. Far superior to any other kind in this color, larger and more substantial, slightly reflexing. Lasts three to four weeks in the garden or cut.

3 bulbs for 75c 12 for \$2.75
25 for \$5.00

INGA HUME

A very striking flower of the new pedigreed tulips. Outside heavily shot with dull rosy-red and with wide yellow border. Within it is ivory to pale yellow, shot with rose.

3 bulbs for \$1.00 13 for \$3.50
25 for \$6.50



SCOTCH LASSIE



CAMELLIA



DUKE OF WELLINGTON



INGA HUME



BLUE DANUBE



Rainbow TULIP COLLECTION

This is the finest collection of tulips it has ever been our good fortune to offer. The bulbs are from the fields containing many of the named varieties from our list and grown expressly for this mixture. It is made up of over 200 varieties of tulips that have been grown in the bulbs farms for the past many years, and contains every color imaginable. This section of the bulb farm is one of the most beautiful in the entire farm when the ten acres devoted to this group is in full bloom, and when you plant the RAINBOW COLLECTION it will be just like taking a small piece of that acreage and putting it right in your own garden. Bulbs in this collection are 10-12 centimeter size and will produce dandy flowers next spring.

- 20 Bulbs \$ 2.00**
- 40 Bulbs 3.50**
- 100 Bulbs 8.00**
- 250 Bulbs 16.00**

Specie Tulip KAUFMANNIANA

The Species Tulips are particularly adapted for use in rock gardens and borders. They show their bright colors early in the season, and are extremely graceful and pretty, with recurving petals. Plant in masses and clumps for the most pleasing effect.

KAUFMANNIANA is the finest of all the Species varieties. It blooms early; flowers are creamy white tinged carmine. Fine for naturalizing.

- 12 bulbs for \$2.00 25 for \$3.50
- 100 for \$12.50

Early-Flowering TULIPS

This class of Tulips has a very important place in the garden for they bloom much earlier than the Darwins and at a time when daffodils are at their best, so they can be used with excellent effect with your other bulbs. They fill in an important period between the time the Daffodils bloom and the other Tulips come in. The double varieties bloom a few days later than the singles and they are excellent for forcing.

SINGLE FLOWERING

RED PINK
YELLOW

3 for 50c 12 for \$1.85

DOUBLE FLOWERING

RED TERRA COTTA
PINK YELLOW

25 for \$3.50 100 for \$12.50



For any additional items you cannot list on other side.

Quantity	VARIETY	Amount

MAY WE SUBSTITUTE: Should we be out of a variety you order, may we give you some other variety of the same color and of equal value. No substitution will be made without permission. **CHECK HERE**
 Yes No

FOLD ON THIS LINE

BE SURE NAME AND ADDRESS IS PRINTED
PLAINLY BEFORE SEALING

*For Best Results Plant
Lago Brand
California Grown Seeds
Oregon Grown Bulbs*

FOLD ON THIS LINE

SACRAMENTO 5, CALIF.

721 - 23 J Street

F. LAGOMARSINO & SONS

BUSINESS REPLY ENVELOPE

First Class Permit No. 57, Sec. 510 P. L. & R. Sacramento, Calif.



Env.-0-Blank Trade Mark, Reg. in U. S. Pat. Office, Stanley Wessel & Company, Chicago, Illinois

FROM _____

TOWN _____ STATE _____

FOLD ON THIS LINE

NAME	STREET or ROUTE No.	POST OFFICE	STATE

WE WILL APPRECIATE IT IF YOU WILL WRITE THE NAMES OF FRIENDS WHO WOULD BE INTERESTED IN OUR SEED AND BULB CATALOGS

CALLA LILIES

Delightful summer-flowering bulbs for the garden or for forcing. They can be planted outdoors in the fall in the Southern states and in California, but should be planted indoors and forced in the Eastern and Northern states during the winter. They can be planted in the cold states outdoors only after danger of frost is over. Plant in partial shade.

YELLOW

A very showy flower of pure golden yellow. Foliage is distinctly spotted white.

3 bulbs for \$1.00
12 for \$3.50 25 for \$6.50

WHITE

The well-known old-fashioned white lily that makes such a wonderful garden flower or house plant. Large ivory-white flower of rich texture; crisply folded petals.

3 bulbs for 75c
12 for \$2.50 25 for \$4.50

PINK

A most unusual novelty. Flower is soft rose-pink deepening to rose-purple toward the edge; grows about a foot high. Often called the Rose Calla.

75c each 3 for \$1.95 12 for \$7.00
(Calla Lilies shipped mid-November)



YELLOW CALLA LILY (ELLIOTANA)



Polyanthus Narcissus

These are the varieties most extensively used for growing in pebbles or fibre and water to flower indoors throughout the winter. They produce clusters of fragrant flowers and are recommended for outdoor planting only in the mild climates of California and the Southern states.

The bulbs may be forced to bloom from Christmas until Easter.

NACISSUS GRANDIFLORA (Paper White Narcissus)

The most popular for forcing. Large clusters of pure white fragrant flowers.

3 for 40c 12 for \$1.50
25 for \$2.75 100 for \$10.00

GRAND SOLEIL D'OR

Large clusters of dark yellow flowers with bright orange cups. Tall, vigorous grower. Extensively used for forcing.

3 bulbs for 50c 12 for \$1.85
25 for \$3.50 100 for \$12.50

POLYANTHUS NARCISSUS (Chinese Sacred Lily)

Large clusters of white flowers with yellow cups. Very fragrant. One of the easiest to grow in bowls.

3 bulbs for 50c 12 for \$1.85
25 for \$3.50 100 for \$12.50

SOLEIL D'OR

CHINESE SACRED LILY

PAPER WHITE NARCISSUS





ALDERMAN
POLE VARIETY



LAXTON'S PROGRESS
BUSH VARIETY

VEGETABLES

A successful Victory Garden can be grown in most parts of California and other states having mild winter weather, and if planted early, will produce just as many fine vegetables as the spring garden. Timing is important, that is your seeds should be in the ground early enough so vegetables are well established before the cold weather that retards plant growth

BROCCOLI

Sow seeds in beds 1/4 inch deep. Transplant to permanent beds when plants are 3 to 4 inches tall. Set in rows 2 1/2 feet apart; place plants 18 inches apart in the rows. Recommended varieties:

ITALIAN GREEN SPROUTING: Tender variety especially suited to home gardens. Side sprouts shoot out when center is cut. Will yield 45 heads per 100 feet of row.

CAULIFLOWER TYPE: Produces heads like cauliflower. Favorite variety for market gardeners. January, February or March maturing varieties.

ANY OF THE ABOVE: Pkt. 10c 1 oz. \$2.50 1/4 lb. \$6.50

CABBAGE

Well-prepared beds with good drainage are important, but cabbage needs lots of moisture and food. Plant seed early, and transplant to permanent location when plants are 3 to 4 inches high. Space rows 2 feet apart and plants 2 feet apart in rows. Best varieties:

LAGO EARLY DUTCH FLAT: Large, solid, compact heads. Good keeper.

LAGO WINTER WAKEFIELD: Solid, semi-globe shape heads. Good kraut variety.

LAGO RED ROCK: Deep red in color; round solid head.

CHINESE CABBAGE: Used for salads and cold slaw. Loose leaves, good flavor.

ANY OF THE ABOVE: Pkt. 10c 1 oz. 65c 1/4 lb. \$2 1 lb. \$7

CAULIFLOWER

Cauliflower is handled the same as Broccoli, planting seeds in beds, then transplanting to permanent beds when plants are 3 to 4 inches high. Start seed in July or August at the latest. Recommended varieties:

EARLY SNOWBALL: First to mature. Compact round heads, pure white.

DANISH GIANT (Medium Snowball): Large, meaty heads. Creamy white.

DANISH PERFECTION (Late Snowball): Large heads of fine quality. Late variety.

ANY OF THE ABOVE: Pkt. 15c 1/4 oz. \$1.25 1 oz. \$4.00 1 lb. \$50.00

ONIONS

ITALIAN RED or TORPEDO ONION

Fast taking its place as the finest onion for the home garden. It has a fine sweet flavor and pure white flesh. Early variety, maturing in 125 days. Elongated or torpedo shape. Does not go to seed when planted in the fall. Introduced by us many years ago and becoming more popular every year.

Pkt. 15c 1 oz. \$1.00 1/4 lb. \$2.75 1 lb. \$7.50

CALIFORNIA RED

Another favorite variety for fall planting that will mature without going to seed. Large, half globe, sweet juicy white flesh, skin red.

Pkt. 15c 1 oz. \$1.00 1/4 lb. \$2.75

1 lb. \$7.50. Matures in 75 days.

STOCKTON YELLOW GLOBE

(California Early Yellow)

Large half-globe onion with lemon yellow skin. Very mild, pure white sweet flesh. Matures in 90 days.

Pkt. 15c 1 oz. \$1.00

1/4 lb. \$2.75 1 lb. \$7.50

DO NOT PLANT ANY OF THE OTHER VARIETIES OF ONIONS IN YOUR WINTER GARDEN AS THEY WILL PROBABLY GO TO SEED AND NOT MATURE. OTHER VARIETIES SHOULD BE PLANTED IN THE SPRING.



STOCKTON
YELLOW
GLOBE

PEAS

Peas make one of the best crops for the winter garden if planted early. Plant in good, well-drained soil. Sow seed 1/2 to 1 inch deep, about 3 inches apart, in rows at least 2 feet apart.

ALDERMAN (Pole Variety)

Best of the climbing type. Matures in 75 to 80 days, producing pods 5 inches or more in length, filled with large, tender peas of fine flavor. Grows over a long period and is very productive.

GIANT STRIDE (Bush)

Wilt resistant. A bush variety that bears large, plump pods about 5 inches long. Peas are large and of fine quality. 75 days to maturity.

LAXTON'S PROGRESS (Bush)

Largest of the bush varieties and one of the best. Bears freely; pods are dark green, about 4 inches long and 3/4 inch wide. Good uniform variety that matures in 60 days.

HUNDRED FOLD (Bush)

A dwarf variety that produces large pods of excellent quality peas. Matures in 62 days and is one of the good market garden varieties.

AMERICAN WONDER (Bush)

A bush variety that matures early and makes a good home garden variety. Matures in 60 days. Very productive. Good to plant along with others.

PRICES ON ALL PEAS:

Pkt 10c 1/2 lb. 30c 1 lb. 50c 5 lbs. \$2.00

for your winter VICTORY GARDEN

sets in. Get your seeds in the ground in August and September for winter vegetables, with the exception of such things as cabbage, broccoli, cauliflower and asparagus. Seed for these vegetables should be in the ground the latter part of July or early August in most parts of California and other states. Other varieties listed here can be planted almost any time in the late summer and fall, but generally speaking most seed should be in the ground by the end of September for a successful winter garden.



LETTUCE

GREAT LAKES

Those who planted this "ALL-AMERICA" WINNER in the spring are loud in their praise of it. The heads are nice and firm, of excellent quality, very crisp, and highly productive. It is resistant to tip-burn, heat and drought, and while invaluable as a summer lettuce because it heads in hot summer weather, it is equally as desirable for a winter lettuce because of its excellent quality. Seed of this variety will never be too plentiful because it is very hard to get this to go to seed, but as fast as seed is available in quantity, this will become one of the leading commercial varieties. The finest new vegetable in years.

Pkt. 25c 1 oz. 75c 1/4 lb. \$2.50 1 lb. \$7.50

LOS ANGELES or NEW YORK

Heads are compactly formed and the outer laves are dark green with broad frilled edges. The standard commercial head lettuce. A good dependable variety.

Pkt. 10c 1 oz. 35c 1/4 lb. 75c 1 lb. \$2.50

RADISHES

A good dependable variety easy to grow at any time. Plant seed 1/2 inch deep in rows 12 inches apart.

SCARLET GLOBE: Best early table variety. Crisp mild flesh. Oval shape.

FRENCH BREAKFAST: Rich scarlet with white base. Good quality, oblong shape.

ICICLE: White radish growing up to six inches in length. Crisp; tender.

LONG SCARLET: Long red radish. Best of the long varieties.

EARLY SCARLET TURNIP: Deep crimson; turnip shape. Good early shape.

ANY OF THE ABOVE:

Pkt. 10c 1 oz. 25c 1/4 lb. 55c



RADISH

CARROTS

These are the number one crop for the winter garden. Plant early so they are well developed by the time cold weather sets in. Sow seed 1/2 inch deep IN WELL PREPARED BEDS. Success with carrots can be summed up in those few words.

RED CORED CHANTENAY: Rich, orange-red variety, very meaty and tasty. Recommended.

NANTES IMPROVED CORELESS: Deep orange color, tender, fine grained and very tasty. Cylindrical; blunt end. One of the best.

DANVERS HALF LONG: A late variety tapering to a blunt end. Bright orange color, rich flavor and a good keeper.

OXHEART: Stocky and heart shaped, 3 1/2 inches across and 5 to 6 inches long. Does well on heavy soils.

IMPERATOR: Popular long carrot, about 8 inches at maturity. Deep orange color, fine grained and sweet. Good bunching type.

PRICE ON ALL VARIETIES:

Pkt. 10c 1 oz. 35c 1/4 lb. \$1.00



DETROIT DARK RED BEET

BEETS

They are easy to grow and give lots of food and vitamins for little work. Plant seed 1 inch deep in rows 18 inches apart. Thin to 3 inches. Plant at 2-week intervals for steady supply.

DETROIT DARK RED (Lago's Perfection Strain): The best all-purpose beet for home and garden. Early globe-shape variety, skin blood red and flesh red and exceedingly tender.

EARLY WONDER: A leading variety for fall gardens. Globular shape, deep red and very tender. Seed is from our own Lago pedigree stock.

PRICE ON ALL VARIETIES:

Pkt. 10c 1 oz. 35c 1/4 lb. 85c
1 lb. \$2.75

SWISS CHARD

An all-year nutritious green especially suitable for fall gardens. Plant seed 1/2 inch deep in rows 18 inches apart. Thin to 6 to 8 inches. Use the young tender leaves as they develop.

FORDHOOK: Favorite giant strain with smooth dark leaves on broad stalks.

GIANT LUCULLUS: Broad, heavily ribbed leaves. Light green color.

EITHER OF ABOVE:

Pkt. 10c 1 oz. 35c
1/4 lb. 85c 1 lb. \$2.40

RED or RHUBARB CHARD: Has dark red veins and stalks and dark green leaves. Fine flavor and a very showy variety that can be used in the flower garden.

Pkt. 15c

SPINACH

One of the best sources of vitamins and minerals from your winter garden. Sow seed in rich, well-drained soil, 1/2 inch deep, in rows 1 foot apart. Successive sowings every two weeks assure a good supply.

HOLLANDIA PRICKLY WINTER: Improved strain with thick dark green leaves.

MONSTROUS or VIROFLAY: Dark green leaves. Leading canning variety.

NEW ZEALAND: Branching variety with thick, fleshy leaves.

ALL OF THE ABOVE:

Pkt. 10c 1 oz. 25c 1/4 lb. 65c

TURNIPS

Makes a fine winter vegetable. Sow seed in July and August for best results. Cover seed 1/2 inch. Thin plants to 4 to 6 inches in rows.

PURPLE TOP WHITE GLOBE: Best variety. Globe shape. White flesh. Tender and tasty. About 55 days to maturity.

GOLDEN BALL: Yellow-flesh globe-shape; medium to large; smooth, of light color. Fine grained; sweet. Good keeper.

PRICES ON ABOVE VARIETIES:

Pkt. 10c 1 oz. 25c 1/4 lb. 55c 1 lb. \$1.25



RED
DOMINION



TALL BEARDED IRIS

RED DOMINION

A very beautiful red iris of good size and substance. The flower is very well formed and balanced, semi-flaring, and a free bloomer. Has a velvety texture that adds greatly to its beauty. Each 75c.

TIFFANY

One of those iris that are so different. It is soft yellow in color, with stitchings of bronzy-pinkish-violet. Very large flower, ruffled, vigorous growing and reasonably tall. Each 85c.

CALCUTTA

Tall and imposing flower in delicate coca-brown tones, entirely overlaid with a bluish veil. Of bold growing habit, widely branched, carrying as many as a dozen blooms per stalk. Each \$1.25.

MISS CALIFORNIA

A truly grand flower of lilac pink, vigorous grower and in every sense a perfect flower. While there are other pinker iris, the shade of this variety has made it one of our most popular. Each 95c.

OLD PARCHMENT

A light creamy tan with golden buff overlay, a most unusual color break and a distinct type. Standards are domed and closed, falls flaring and tailored in appearance. Huge flower of heavy substance, and one of the longest lasting in the garden. Each \$2.50.



TIFFANY

COLLECTION A

GROUP OF 5

Shown on page 28

One of each

\$5.50

A \$6.30 value



COLLECTION C

GROUP OF 10 IRIS

Shown on pages 28 and 29



CALCUTTA



MISS CALIFORNIA



OLD PARCHMENT

Probably no greater advance in flower culture has been made in the past ten years than that made in the development of the Bearded Iris, and surely no flower gives more enjoyment and satisfaction with such little care and attention.

The varieties offered today are larger and have greater substance; they have better color; they bloom over a longer period of time; they are free of pests and diseases common to many other flowers. You will find them perfectly hardy anywhere, and because they require so little care and attention, they offer a lot of real flower pleasure for very little investment.

LIGHTHOUSE

A very bright rose blend, of bold growing habit with enormous flowers. In effect an old rose self with a most brilliant center of yellow and fiery gold. Considered one of the finest introductions of the last few years. Each 85c.



LIGHTHOUSE

GOLDEN TREASURE

Solid deep cream with an outpouring of rich golden orange all about the central portion of the flower. Tall, perfectly branched, very floriferous; this will stand out in any planting. Each 75c.



GOLDEN TREASURE

APRICOT

This is a seedling of Far West, a solidly colored golden apricot self. Of medium size, with a slight fluting and ruffling in both standards and falls. Each 85c.

STAINED GLASS

A copper-red self, one of the most brilliant of all iris. With the sun behind it, it resembles nothing quite so much as stained glass . . . rich, glowing, almost flame. This is a solid copper of reddish tone, the same all over except for the bronze yellow beard. Each \$1.50.

MOHRSON

Seedling of the famous iris Wm. Mohr. For almost a decade hybridizers have been trying to secure seedlings from this strange and enchanting flower, and at last we are able to offer one. Mohrson is much taller than its parent, of a deep violet color, very heavily veined still darker. We can supply excellent plants this season. M. M. AIS 1935. Each 75c.

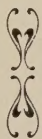


MOHRSON

One of each

\$8.50

A \$11.00 value



COLLECTION B

GROUP OF 5

Shown on page 29

One of each

\$4.00

A \$4.70 value



APRICOT



STAINED GLASS



FLOWER SEEDS

to sow **NOW** for Beauty and Color in the garden

Seed of most varieties of perennials, and a few varieties of annuals, should be started now in California and the Southern states to provide plants for next years bloom. The hardy perennials can be sown outdoors, and annuals started in flats or hotbeds. All can later be transplanted to their permanent location. In the colder climates, seed should be started in cold frames and transplanted in the spring when well established.



CARNATIONS

ALYSSUM (Annual)

Fine edging plant easily grown. Sow it right where you want it to grow. It will be in bloom practically all summer. Sow thinly and cover lightly.

CARPET OF SNOW: Dwarf creeping habit, forming a carpet of white flowers.

Pkt. 10c 1/4 oz. 45c Oz. \$1.50

LITTLE GEM: Very dwarf and compact; free flowering; for bedding and edging.

Pkt. 15c 1/4 oz. 55c Oz. \$1.60

VIOLET QUEEN: Compact and dwarf; free flowering with sweetly scented rich, deep lilac violet colored flowers, blooming all summer long.

Pkt. 15c 1/4 oz. 55c Oz. \$1.60

ANCHUSSA

Tall branching plants with Forget-me-not like flowers.

BLUE BIRD (Annual): Deep blue flowers on 18-inch stems. Pkt. 10c 1/4 oz. 40c.

ITALICA (Perennial): Gentian-blue flowers on 6-foot stems. Pkt. 10c 1/4 oz. 40c.

DWARF ANCHUSSA (Perennial): Flowers like Blue Bird; only 15 in. Pkt. 25c.

AQUILEGIA (Columbine)

Greatly improved perennial varieties with long spurs and large flowers. Best in semi-shaded location. Make wonderful cut flowers.

LONG SPURRED BLUE; LONG SPURRED ROSE; LONG SPURRED CRIMSON; LONG SPURRED COPPER.

MRS. ELLIOT'S HYBRID MIXED: Finest mixture of popular colors.

MRS. NICOLLS: Deep sky-blue spurs with white centers.

ANY OF THE ABOVE: 25c per packet 5 packets \$1.00

ARMERIA

Sea Pink. Perennial, growing about 18 inches, with large globular red flowers. Pkt. 15c 1/16 oz. 75c

LUPINE

Russel Hybrids (perennial). Without a doubt the most outstanding type ever introduced. Since their introduction in 1938 they have replaced almost all other varieties. Strong, vigorous growers with huge spikes of enormous flowers in every conceivable color. Pkt. 50c.

GEUM (Perennial)

Double and semi-double flowers of intense autumn colors, on 2-foot stems.

MRS. BRADSHAW: Orange-scarlet double flower. Very showy. Pkt. 15c 1/8 oz. 75c

LADY STRATHEDEN: Double golden-yellow flower. Pkt. 15c 1/8 oz. 75c

PRINCE OF ORANGE: Magnificent golden-orange blooms. Pkt. 25c 1/16 oz. \$1.00



RUSSELL LUPINE

COLUMBINE



GEUM



GAILLARDIA



CARNATIONS (Annual)

Beautiful fragrant flowers on long stems that will supply you with an abundance of cut flowers all summer.

ENFANT DE NICE: Strong growing variety with early blooms. Large flowers.

GIANT DOUBLES: Improved Chabaud strain with large double flowers with serrated petal edges. Colors red, rose, pink, yellow and white.

ANY OF THE ABOVE VARIETIES: Pkt. 25c 1/8 oz. \$1

BELLIS (English Daisy) (Perennial)

Low growing perennial with large double flowers. Our IMPROVED strain is the finest available. Giant Mixed: Pkt. 15c.

CAMPANULA

Canterbury Bells. BIENNIALS: Cup and saucer type having large calyx the same color as the flowers, giving cup and saucer appearance. In rose, pink, blue and white. Pkt. 15c 1/8 oz. 50c

Canterbury Bells. PERENNIAL: Hardy plants for the garden. We recommend **BLUE BELLS OF SCOTLAND.** Graceful, bell-shaped flowers. Pkt. 25c.

CALENDULA

Pot Marigold. Plant seed of this showy flower in July and August for a wealth of color in your garden in late fall and early winter. Our fine Lago strain blooms profusely with cutting and withstands heavy frost.

YELLOW COLOSSAL: Bushy plants loaded with large, double bright yellow bloom.

BALL'S LONG ORANGE: Huge double flowers of brilliant glistening orange. Has nice long stems. Fine for cutting.

BALL'S MASTERPIECE: Rich deep orange flower with dark center. Long stems.

ORANGE KING: Rich deep orange red with dark center. (Florist's strain.)

ANY OF THE ABOVE:

Pkt. 25c 1/4 oz. 50c Oz. \$1.25

GAILLARDIA (Perennial)

(Blanket Flower.) A very showy flower that will, when planted in full sun, produce richly colored, long-stemmed daisy-like flowers throughout the summer.

DAZZLER: Golden yellow and maroon red. Pkt. 15c 1/8 oz. 50c

THE KING: Deep red, edged with gold. Enormous flower. Pkt. 25c 1/8 oz. 75c

MONARCH MIXED: A robust strain very varied in coloring and with flowers of giant size and perfect form. Pkt. 25c 1/8 oz. 75c

COREOPSIS

Hardy perennial growing 18 inches tall with lovely double-daisy flowers with broad fluted petals, rich in color. Wonderful cut flower; long lasting.

MAYFIELD GIANTS: Large blossoms of rich golden yellow. Pkt. 15c 1/4 oz. 45c

DOUBLE SUNBURST: Semi-doubles; very charming. Pkt. 15c 1/4 oz. 50c

DAISY, SHASTA

SHASTA ALASKA: Splendid hardy perennial of pure white flowers with dark center, rarely less than 5 inches across. Pkt. 10c 1/8 oz. 35c

DOUBLE DAISY, Dieners Strain. New and interesting double and semi-double flowers with long, narrow fringed petals in many patterns and forms. Pkt. 35c 1/16 oz. \$1.25

DIGITALIS (Foxglove) (Biennial)

GIANT SHIRLEY MIXED: The very finest strain. Plants are vigorous, often growing 7 feet tall. Flowers range from white to dark rose, beautifully spotted with darker colors.

Pkt. 15c 1/16 oz. 35c

HEUCHERA

Coral Bells. Hardy Perennial with deep green mat of leaves from which extend clusters of coral bells on stems 12 to 18 inches high. Very showy for borders and planting with spring bulbs.

Pkt. 35c 1/16 oz. \$1.00

PRIMROSE

Primula. One of the best of all plants for bedding purposes, combining beautifully with spring bulbs for color. Dainty flowers rise above rosettes of dark green leaves. Fine for shady locations.

POLYANTHUS MIXED: A superb strain of English Primrose.

GIANT MUNSTEAD: Large flowers in many rich shades of yellow.

RUBRA: Assorted rich, ruby-red shades.

OBCONICA: Favored for potting work. Mixture of many colorful shades.

ANY OF THE ABOVE: 50c pkt.

HOLLYHOCK (Perennial)

Newer strains of this old fashioned flower are a big improvement over the old ones. These improved flowers are meeting with increased favor for backgrounds, along fences, as screens, etc.

IMPERATOR: Large double blooms, fringed petals and double rosette.

TRIUMPH: Richly colored flowers with waved and fringed petals.

CHATERS DOUBLES: Popular strain of large flowers in maroon, scarlet, rose, salmon, white, yellow and pink.

ANY OF THE ABOVE: Pkt. 15c 1/8 oz. 50c

PYRETHRUM (Perennial)

Painted Daisy. Daisy-like flowers in an array of showy colors. They are ideal cut flowers and grow most anywhere. Prefer partial shade. We recom-

PRIMROSES



mend ROBINSON'S HYBRIDS as the finest assortment of mixed colors of rose and red. Seed has been carefully selected from choice plants.

Pkt. 25c 1/8 oz. \$1.00

SCABIOSA

Plant these perennials for maximum bloom.

CAUCASICA: Lilac-blue flowers 2 to 4 inches across borne on long stems.

COLUMBARIA LAVENDER: Delicate lavender-blue flowers of good size on tall stems.

COLUMBARIA PINK: Soft pink flowers measuring 2-2 1/2 inches across. A companion flower to Columbaria Lavender.

ANY OF THE ABOVE: 25c pkt. 1/8 oz. 90c

STOCKS (Annual)

Gilliflower. One of the showiest of all flowering plants, for they are a mass of color throughout the growing season. Highly recommended for color in the garden as well as cut flowers.

GIANTS OF CALIFORNIA: The very latest word in big double-flowering stocks. We like these varieties:

Pacific, dark blue; **Santa Maria,** pure white; **Yosemite,** rose pink. **Lago Giant Mixture:** A fine assortment of all colors in this strain of super flowers.

PRICE OF ANY OF THE ABOVE: 35c per pkt.

SNAPDRAGONS (Annuals)

Super Giant Rust-Resistant: Our strain of rust-resistant far supersede the old varieties and can now be enjoyed to the fullest in your garden. Sow seed early to have plants for late winter and early spring bloom in the mild climates. We recommend:

CAMPFIRE: Dark orange with scarlet sheen; yellow lip.

CRIMSON: Brilliant crimson.

INDIAN SUMMER: Coppery orange-scarlet.

LOVELINESS: Beautiful rose-pink.

YELLOW CROWN: Rich golden yellow.

LAGO RAINBOW MIXTURE: A collection of the best shades and colors.

ANY OF THE ABOVE: 15c pkt. 1/16 oz. 45c

SWEET WILLIAM (Perennial)

This old garden favorite has been greatly improved and is today offered in varieties with large, showy heads of good sized individual blooms.

HOLBORN GLORY: Striking combination of deep crimson and white.

NEWPORT PINK: Rich pastel, deep salmon-rose.

SCARLET BEAUTY: Rich, velvety scarlet.

GIANT WHITE: Very large white flowers.

SINGLE MIXED: Fine assortment of single flowers of all colors.

DOUBLE MIXED: Best assortment of double flowers of all colors.

MIDGET MIXED: Dwarf type for edging and rockeries. Very attractive.

ANY OF THE ABOVE: 15c pkt. 1/8 oz. 50c



STOCKS



SCABIOSA



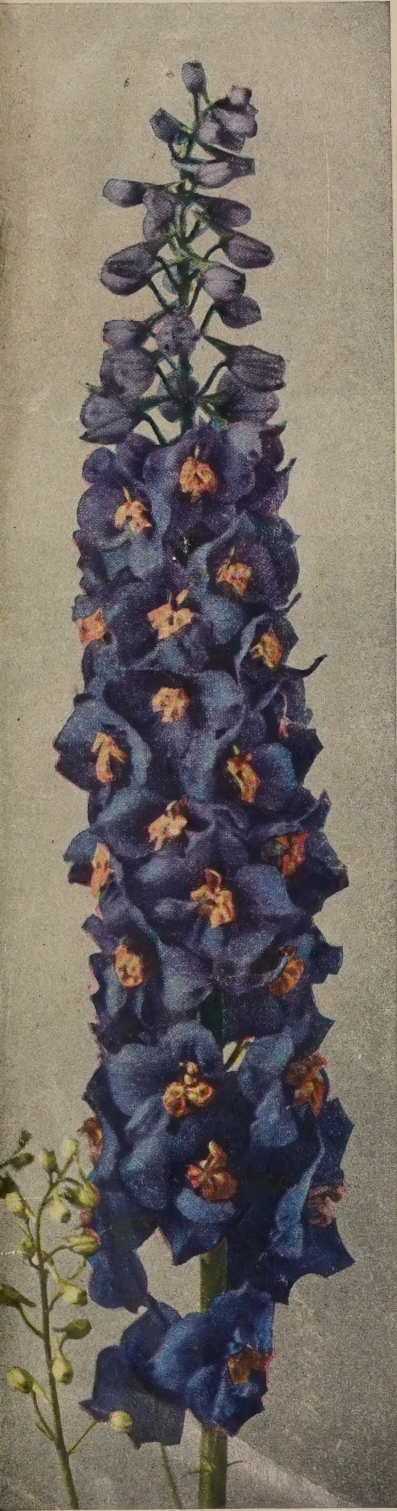
SNAPDRAGONS

SWEENEY, STRAUB & DIMM
HORTICULTURAL PRINTERS
PORTLAND, ORE.

PACIFIC GIANT DELPHINIUM

Remarkable new strain developed by Vetterle & Reinelt on the Pacific Coast. Flowers are extremely large and well formed, 2½" to 3½" in diameter, symmetrically spaced on well balanced spikes of thin woody stems practically 100% double. Our seed is produced from the originator's stock seed.

PACIFIC GIANT DELPHINIUMS



- | | |
|--|--|
| Galahad Series
Giant White | Guinevere Series
Clear Pink-Lavender |
| Cameliard Series
Clear Lavender | King Arthur Series
Rich Royal Purple |
| Black Knight Series
The Darkest Violet | Round Table Series
A mixture of all colors |

Self-pollinated seed from **Originator's Stocks.**
 Trial Pkt. 50c (Approx. 200 seeds) Large Pkt. \$1.00 (Over 400 seeds)

Lago Giant Spencer SWEET PEAS

Our fine strain of Sweet Peas produce flowers of exceptional substance and color. They are giant size, produced on long stems, making them exceptionally good for cutting. Plant these once and you'll never be satisfied with any other strain. Equally as fine for outdoor and greenhouse planting.

COLORS:

- Blue . . . Cerise . . . Cream . . . Crimson . . . Lavender . . .
 Maroon . . . Mauve . . . Orange . . . Pink . . . Purple . . .
 Rose . . . Rose Carmine . . . Salmon . . . Scarlet . . .
 Scarlet Cerise . . . White

Large size packet 25c each
 (Order by separate color or mixed)

PANSIES Lago SUPER Giant

Our magnificent blend of choice colors far surpasses in quality and range of color any mixture of Swiss Giants we have ever seen. Flowers are exceptionally large and the plants are free blooming. Pansies are far more colorful and interesting since the introduction of the Swiss Giants, and we have had the finest reaction to this special Lago mixture:

25c per packet Large packet \$1.00



SWEET PEAS



PANSIES

F. LAGOMARSINO & SONS
 721 J STREET
 SACRAMENTO, CALIFORNIA

Ralph R. Shaw
 U.S. Dept. Agricul.
 Washington, D. C.

SEC. 562, P. L. & R.
 U. S. POSTAGE
PAID
 PORTLAND, ORE.
 Permit No. 86

Postmaster:
 Return postage guaranteed.